

ACCORDION CARD INSTRUCTIONS

PRINT

Print the patterns on page 2 and 3 on cover stock. You may be able to do this printing directly with a printer that is connected to a computer, or you can print out the pattern on white paper and copy it onto cover stock with a commercial copier. Be sure that the grain of the paper runs vertically for the accordion mechanism.

SCORE

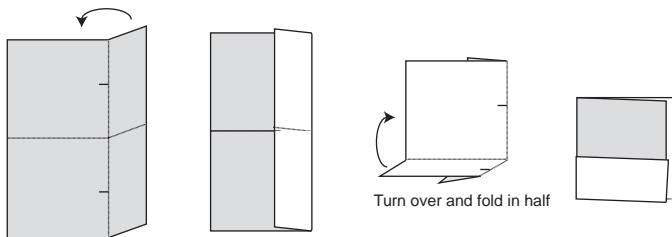
Score all of the dashed lines. The lines on the card should be scored all the way across to the edges of the paper even though the dashed lines do not go that far.

CUT

Cut along the solid lines of the accordion mechanism. This includes the line down the center which will give you two pieces. Cut out the slots by completely removing the thick black lines. There are 14 of these cuts on the accordion mechanism pieces and two of them on the card base.

FOLD

Fold the bottom of the card base up and then fold the card in half. Trim the edge if it is uneven.



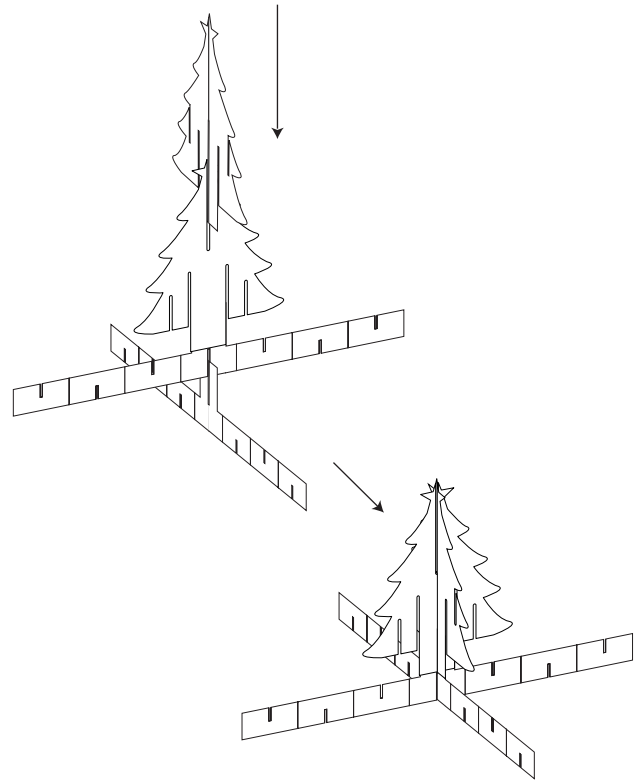
Fold bottom up

DECORATE

Stamp, emboss, paint, etc., the tree and the card before putting it all together.

GLUE

Begin the construction with the large tree piece that has the solid trunk and the accordion piece that has the solid center tab. Glue the tree to the tab, making sure that the tree doesn't go below the top of the rest of the strip. Slide the accordion piece that has a slot in the center tab onto the other accordion piece. Orient the accordion pieces so that the unmarked sides are facing you. Slide the other large tree piece onto the first one and glue the trunk to the center tab of the second accordion piece.

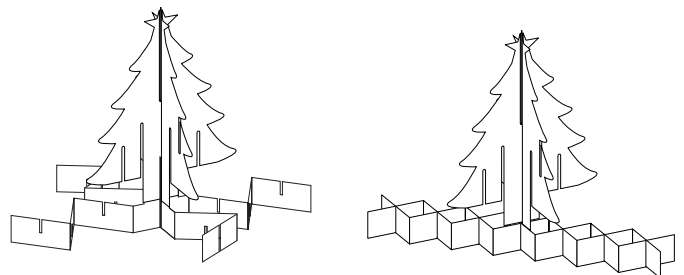


ASSEMBLE

Put the rest of the tree together.

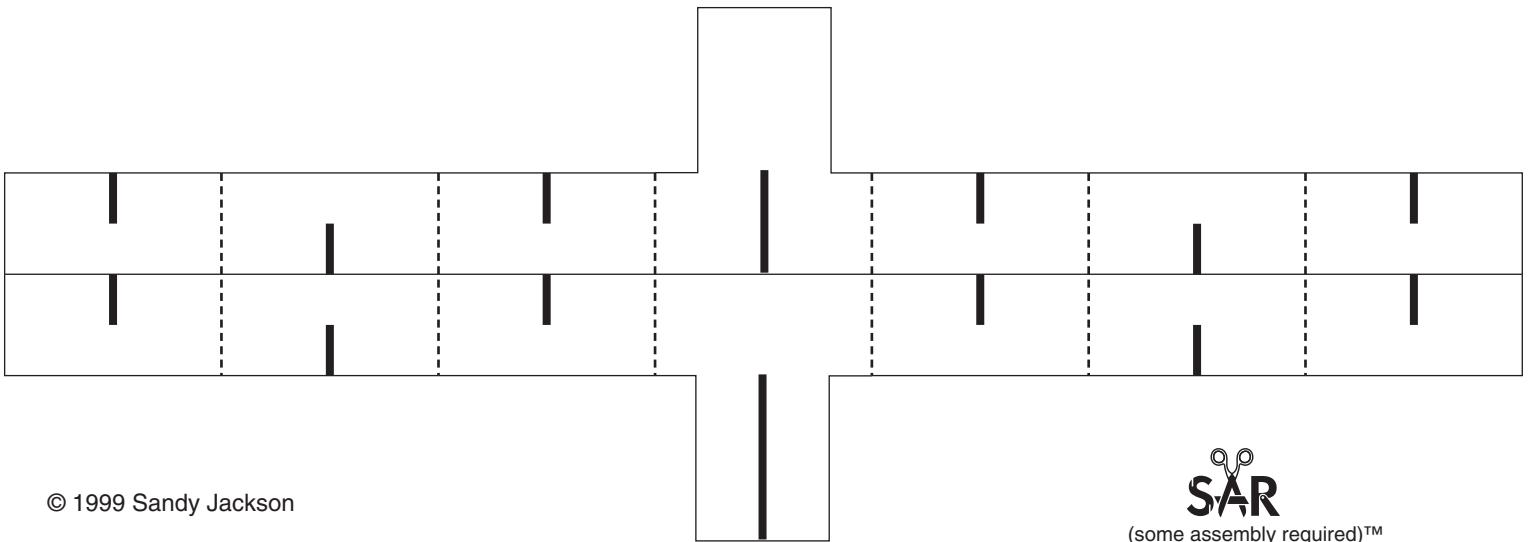
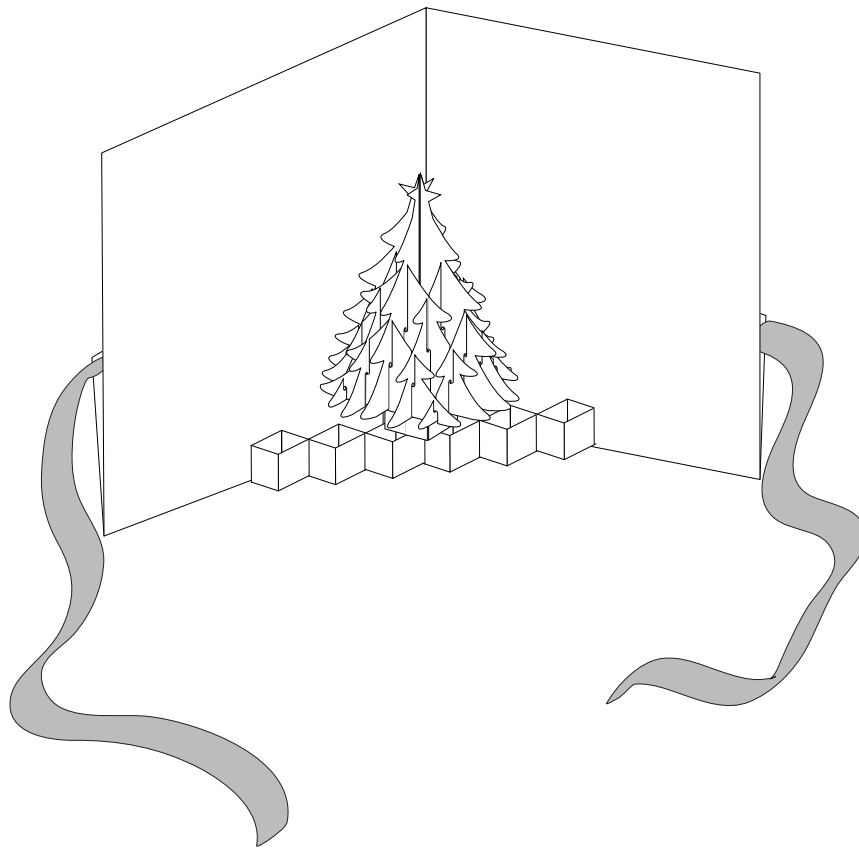
FOLD SOME MORE

Starting on the right hand side, fold the first crease on the nearer strip away from you. Fold the next crease towards you and alternate the direction of the creases to the end of the strip. Do the reverse on the other side. Now crisscross the folded pieces and hook the slots together.



ATTACH

Put the end tabs of the accordion mechanism through the slots in the card. Glue the tabs down to both the main body of the card and the folded-up flap. Insert a ribbon between the top of the flap and the main body of the card and glue it in place.



© 1999 Sandy Jackson


(some assembly required)™

