

# The Evergreen Tree Light

## Materials and Equipment

80 lb. cover or card stock, preferably Plastisheen Black which is black on one side only

Heavy translucent vellum, preferably, Glama Natural Clear (basis weight 48 lb.)

White glue

3D Tree Stamp Set and light-colored ink for stamping

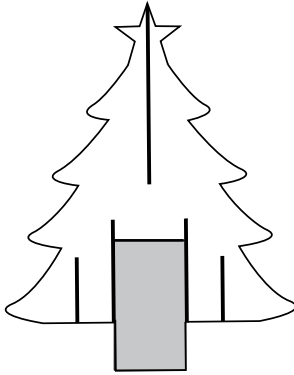
Black brush pen

Straightedge and scoring tool

Craft knife

## Stamping and Cutting the Tree

1. Stamp the pattern pieces for the Tree following the instructions in the stamp set, and cut them out. Cut off part of the center "trunk" sections of each of the 2 large tree pieces, as indicated by the gray area, leaving a 1/4 inch at the top:



2. Assemble the tree and set aside.

## Making the Box

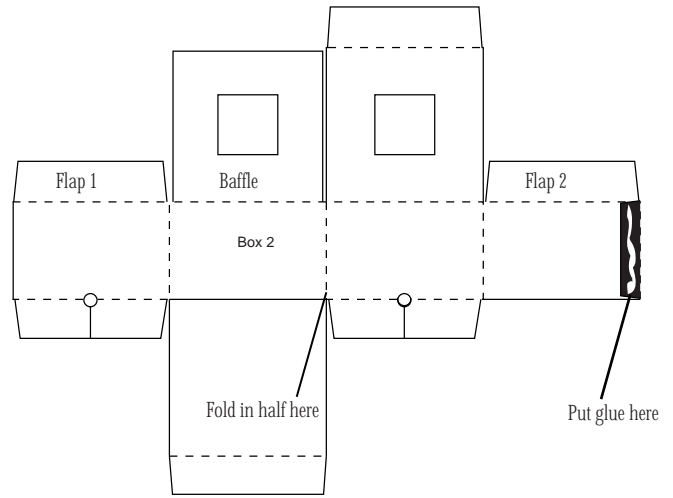
1. Print the pattern for the boxes on the white side of the Currency Black paper. Box 1 is a simple box that is less fuss to make, but it does not prevent the light from coming out the sides as well as the more elaborate Box 2 (the Better Baffle Box). Try both to see which one you prefer.

2. Score on the dashed lines (use a straightedge) and cut on the solid ones. Use a hole punch for the circles. You may need to adjust the size of the holes to accommodate the wires for the light. Use the black marker to color along the edges of the paper and inside the sides of the lids and anywhere the white might show.

**TIP:** Use a cutter that is held in the palm of the hand for this type of cutting, rather than an Xacto knife that is held like a pencil. Put your middle finger down when you cut to steady the knife. If you move your whole arm as a unit, you can cut by sight on the lines and won't need a straightedge.

3. Fold the scored lines a little to make sure that all were scored. Fold the lids over the center of the box to the inside and crease down. Unfold. Fold the flap on the left hand side of the box to the inside of the box, fold the box in half and glue the tab to the inside of the box. Open the box when the glue has dried.

4. Score and cut out the Tree Base piece. Fold the tab on the end to the inside of the base, fold in half and glue the tab to the inside of the base.



## Assembling the Light

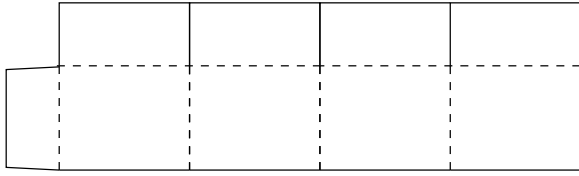
1. Use one bulb on a small chain of little white lights to illuminate the tree. Put the wire through the hole and center the light in the middle of the box. Use a bent pipe cleaner to keep the light upright.

2. Fold in flap 1. Open out the tabs on the tree base. From the inside, put the tree base into the hole of the baffle and fold the baffle down. Fold in flap 2 over the baffle. Fold in the tab on the lid. Fit the tree base through the hole and guide the light through as you close the lid and tuck the tab into the box. Pull the tree base up as far as it will go.

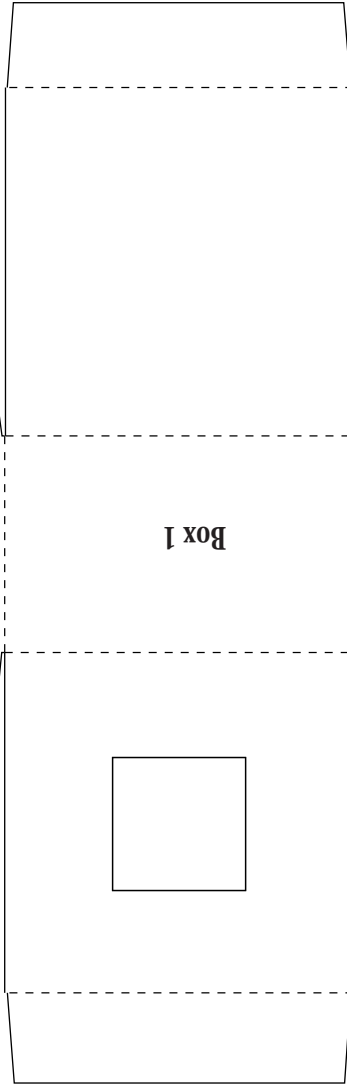
3. Make sure that the light is centered in the hole and put the tree over the tree base. You may want to glue a band around the tree trunk, but it is not necessary. When displaying the tree on a flat surface, you will probably need to tape the wires down where they come out of the box. If you want to hang the tree light you will have to glue the tree onto the base.

### IMPORTANT MESSAGE!

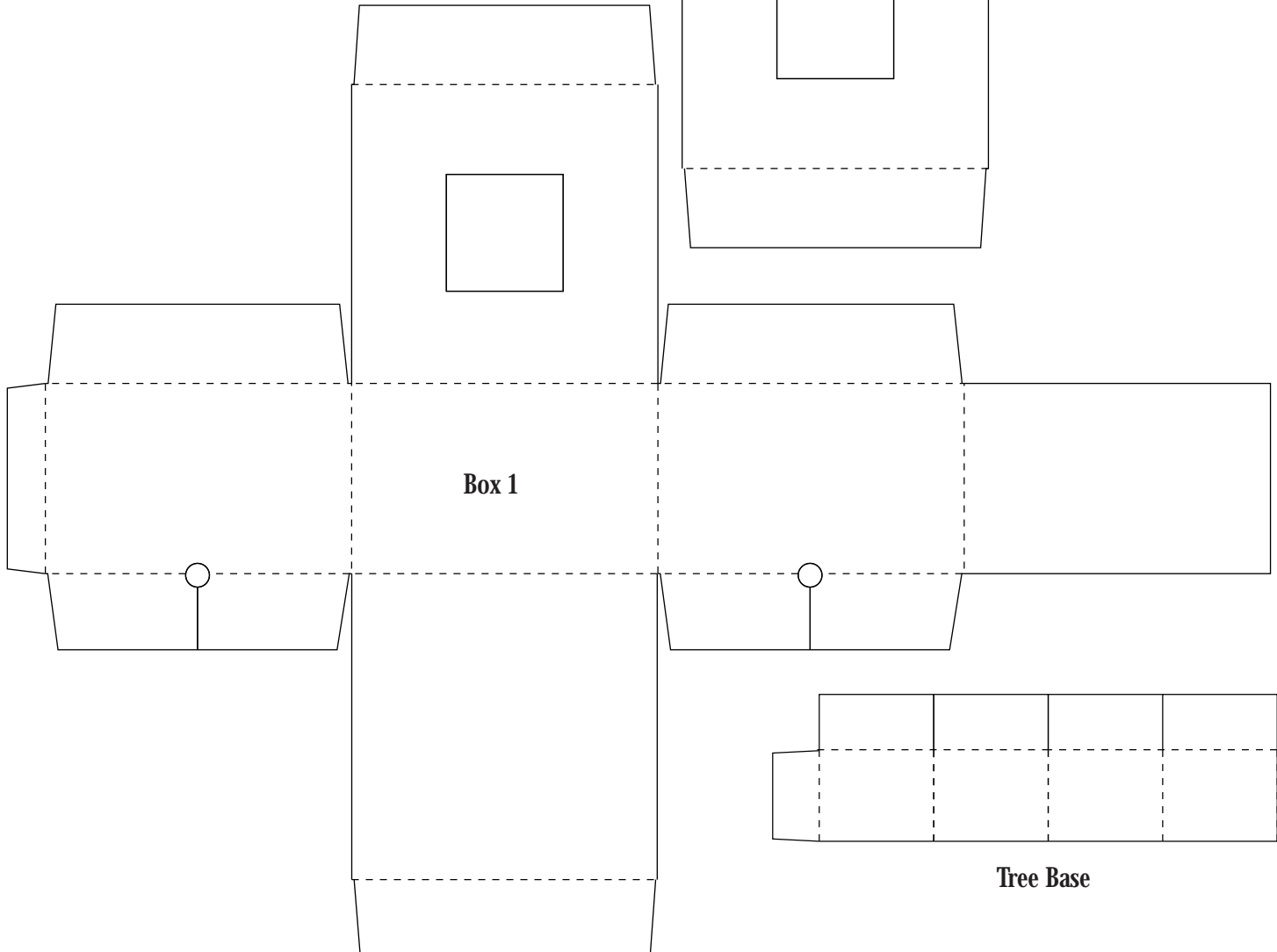
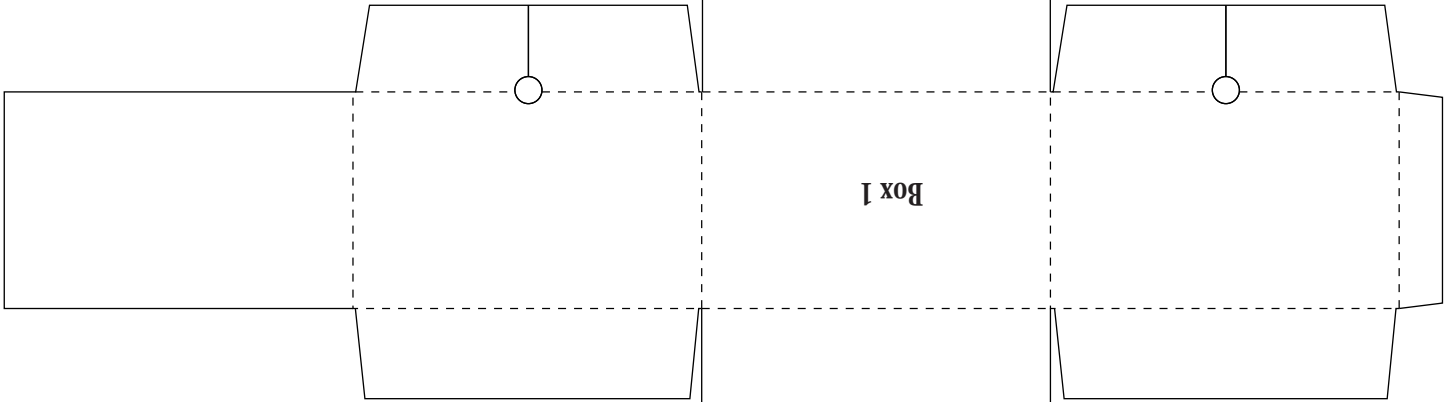
Neither I (Sandy Jackson) nor (some assembly required)<sup>TM</sup> can be held responsible for any mishaps involving potentially dangerous lights and paper. Use common sense, test your materials, and NEVER leave the Tree Light unattended! And don't even think of putting a candle inside the box or the tree.



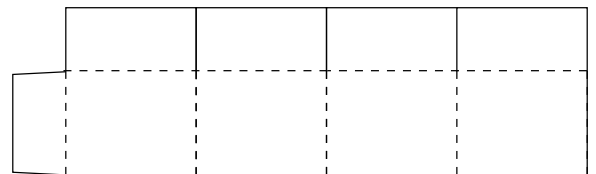
**Tree Base**



**Box 1**



**Box 1**



**Tree Base**

